

Manufacturer Information

Dialogic Systems GmbH & Co KG

Untere Dorfstraße 2

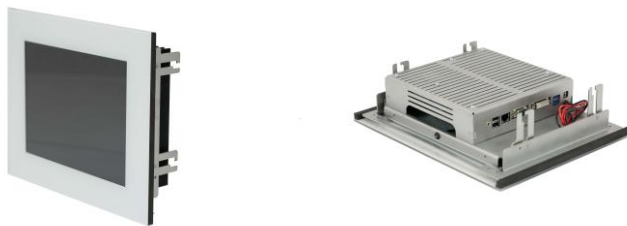
D-85653 Aying, Germany

Phone: +49 (0) 8095 873 373 0

E-Mail: info@home-cockpit.de

Web: <https://www.home-cockpit.de>

In-wall Touchpanel 10,4 inch



Major V5 - capacitive multitouch PC 10,4 inch/120GB SSD/8GB RAM / white / Win10 IoT Enterprise

The Home Cockpit Major shines with its' versatile options of use. No matter if smarthome or video surveillance, our Major offers a perfect platform for your' individual visualisation through state of the art multitouch functionality. Use every of your' 10 fingers to manage desired operations. The Microsoft Windows operating system enables you to install whatever software you like to implement smarthome functions. We also offer multiple different options in software that make Home Cockpit touchpanels a perfect fit for every situation. Possible uses include door intercoms, camera surveillance, multimedia use and many more. Our hardware is optimized to be running 24/7 which makes it perfectly suitable for any fields of use.

Technical specifications

Hardware

- CPU: Intel J3455 Quad Core
- Main memory: 8 GB RAM
- Hard disk space: 120 GB SSD
- Power adapter: 15V / 4A DIN rail power supply

Ports

- USB port: 4xUSB 3.0
- LAN port : 2xRJ45 LAN Gigabit
- Video port: 2xHDMI
- Audio port: 1x Line-out

Display

- Size: 10,4 inch screen diagonal
- Resolution: 1024 x 768 pixels (XGA)
- Aspect ratio: 4 : 3
- Touchscreen: projected capacitive touchscreens (PCT / PCAP)
- Frame color: white

Audio

- Speakers: 2 x integrated speakers (2 Watts each)
- Microphone: integrated condenser microphone (get voice-performance-block for noise reduction)

Sizes

- Display size: 158 mm x 211 mm (h x w)
- Total size: 242 x 295 x 75 mm (h x w x d)
- Weight: 3,5 kg

Software

- Operating system: Windows 10 IoT Enterprise 2019 LTSC
- Additional software is available in our shop and will be installed and licensed before shipment

Mounting

- Mounting inside the wall (wallbox 211201 necessary)
- Flush-mount kit for inside the wall (wallbox 211201-211211 necessary)

Scope of delivery

- Touchpanel
- Mounting frame
- 15V / 4A DIN rail power supply
- Brief description and mounting advice

Additional equipment

Necessary

- Wallbox 211201 (+ 211211 for flush-mount kit)

Optional

- Motion detector
- Camera (5 megapixel)
- Voice performance block
- Backup & Recovery USB Stick 64GB

Item number:

171432

Quantity: _____ pcs

price per piece: _____

Net total: _____

Tax (____%): _____

Gross total: _____